

base Burton Amateur  
Stage Entertainers

# SINBAD

## AND HIS 8TH VOYAGE

Written by Alan P. Frayn  
Produced and Directed  
by Ken Dawson

Win  
Sleeping Beauty  
tickets  
inside

Programme  
£1.50

**Tuesday 17th - Saturday 21st February 2015**  
Nightly 7.30pm, (Weds: 6.30pm), Thursday & Saturday Matinee 2.30pm  
At the Burton Brewhouse Arts Centre

# CHAIRMAN'S MESSAGE

A very warm welcome to the Brewhouse and our 44th production - Sinbad and his 8th Voyage. I'm sure you're in for a great time of entertainment. I would like to wish the very best of luck to this year's director Ken Dawson - hopefully we can remember our lines!!!!!!.

I say every year how much planning and hard work goes in to putting on a great panto so a big thank you to all the committee, the performers themselves, backstage crew, front of house and the Brewhouse staff for their continued support.

Our chosen charity this year is The Brain Tumour Charity. Sadly, last year our stage manager Simon Collins was diagnosed with a brain tumour. Therefore our motivation to raise money and awareness drastically increased, so please help us with your support.

Please look out for next year's production Sleeping Beauty, more details can be found on our web site [www.base-panto.com](http://www.base-panto.com).

If anyone is interesting in joining us either on stage or backstage - just follow the link! We are a friendly bunch - Honest!!

So enough of me babbling on. Sit back, relax and don't forget to shout as we send you on a magical journey, full of song, dance and maybe a bit of laughter!! A perfect mix for a great panto.

Remember - "It's behind you!"

**Martin Goodall**  
*Chairman*

# A WORD FROM THE PRODUCER

Welcome to this year's entertaining telling of Sinbad and his 8th Voyage. Pantomime is often our 1st experience of live theatre and we hope this year's production will set many forward on a journey into enjoying and participating in both amateur and professional theatre.

I have to extend the greatest of thanks, admiration and pride in a cast that have put up with my foibles and eccentricities to put on a truly wonderful show in the best BASE tradition. Although it is always sad when members of the society move on to pursue other interests, we are blessed again with talented newcomers who quickly grasp the concept of having great fun whilst honing a professional performance. We continue to welcome new members each year who share our love for traditional pantomime with its blend of comedy, drama, dance and song and would urge any of you to come to one of our workshops and 'give it a go'.

We also are blessed with a strong supportive Committee who ensure the project (and the majority of my excesses) are brought to the stage for you today. Thank you all for supporting our ventures and for supporting live amateur theatre at the Brewhouse, we hope and trust for many years to come.

**Ken Dawson**  
*Producer & Director*



# THE BRAIN TUMOUR CHARITY

The Brain Tumour Charity is at the forefront of the fight to defeat brain tumours and is the only national charity making a difference every day to the lives of people with a brain tumour and their families.

We fund pioneering research to increase survival and improve treatment options. We raise awareness of the symptoms and effects of brain tumours to get earlier diagnosis and to help families cope with everything that the diagnosis of a brain tumour brings. We provide support for everyone affected so that they can live as full a life as possible, with the best quality of life.

We are committed to having the biggest possible impact for every person affected by a brain tumour, to defending the most amazing part of the human body, so that getting the diagnosis of a brain tumour no longer means a death sentence.

We believe that fighting brain tumours on all fronts through research, awareness and support is the only way to save lives, reduce long term disabilities and help everyone with a brain tumour and their families cope with everything that the diagnosis of a brain tumour brings.

We are members of the Association of Medical Research Charities, The Information Standard, The Helplines Partnership and the Fundraising Standards Board.

Brain tumours reduce life expectancy by, on average, 20 years - the highest of any cancer. Brain tumours are the biggest cancer killer of children. *Less than 2% of the cancer research funding in the UK is spent on brain tumours.*

Buying this programme and taking part in the raffle we run during the show week - has helped support this charity and its work. Thank you.

The **BRAIN  
TUMOUR  
CHARITY**

*M. J. Goodall*

BRICKLAYING  
SERVICES



M. J. Goodall (Bricklaying Services)

are proud to be associated with

Burton Amateur Stage Entertainers

and would like to wish them

Good Luck with Sinbad and his 8th  
Voyage in 2015.

Tel:

**01283 552198**

Mobile:

**07801 351879**

# SINBAD

## AND HIS 8TH VOYAGE

### ACT ONE

Prologue  
Tales of Old

Scene 1  
Constantinople!

Scene 2  
Our Tale Unfolds

Scene 3  
The Royal Palace

Scene 4  
No Time to Lose

Scene 5  
The Eighth Voyage Begins

Scene 6  
Meanwhile Back at the Palace

Scene 7  
The Retreat of the Roc

Scene 8  
The Valley of Diamonds



### ACT TWO

Scene 1  
Old Bazaar in Cairo

Scene 2  
Pit Stop

Scene 3  
Sail or Return?

Scene 4  
The Kingdom of Coral

Scene 5  
In the Nick of Time?

Scene 6  
Song of the Seas

Scene 7  
Journey's End

# Peter Bourne Communications

Limited

Update and manage your **Content**

Improve **Search Engine Performance**

**Ecommerce** integration

Hassle-free **Hosting**

Eye-catching **Photography**

Making your website work  
for your business

[www.peterbourne.co.uk](http://www.peterbourne.co.uk)

[hello@peterbourne.co.uk](mailto:hello@peterbourne.co.uk) 01283 215976

Bleak House, 68 Ashby Road, Boundary, Derbyshire DE11 7BY

# PRODUCTION & MUSICAL TEAM



**KEN DAWSON**  
*Producer & Director*



**AMY GAUNT**  
*Choreographer*



**JODIE SWANN**  
*Asst. to Director  
& Choreographer*



**ALEX PRIESTLEY**  
*Keyboard*



**LORRAINE JOHNSTON**  
*Prompt*

# SINBAD

AND HIS 8TH VOYAGE

## Credits

Producer & Director ..... *Ken Dawson*  
Assisted by..... *Jodie Swann*  
Writer ..... *Alan P. Frayn*  
Choreography..... *Amy Gaunt & Jodie Swann*

## Music Provided by:

Keyboard ..... *Alex Priestley*

## Production Team:

Stage Manager..... *Simon Collins*  
Electrician/Sound ..... *Robert Bond & Matt Bancroft*  
Stage Crew ..... *Ben Millward, Tony Green,  
Karl Hollingworth & Keirain Swann*  
Curtains ..... *Ken Dawson*  
Properties ..... *Alex Goodall*  
Call Boy ..... *Linda Gaunt*  
Prompt..... *Lorraine Johnston*  
Wardrobe..... *Barbara Bond, Gemma East,  
Amy Gaunt & Lesley Hill*  
Dresser to Dame and cast..... *Alyson Bates*  
Photography & Programme..... *Peter Bourne*  
Scenery ..... *Albermarle Scenic Studio  
www.albermarleproductions.com*  
Production Scenery Design..... *Ian Wilson*  
Additional dialogue and props ..... *Ken Dawson, Laura Craddock  
& the cast*  
Raffle & Front of House ..... *Friends of BASE*

*Costumes provided by Molly Limpet's Theatrical Emporium Ltd, 712 Chesterfield Road,  
Sheffield, S8 0SD. (0114) 2500851 www.mollylimpets.com*

# Pawfect Pups Dog Grooming

All aspects of dog grooming undertaken:

- Bath and Blow Dry
- Full Groom
- Clipping
- Hand Stripping
- Undercoat Removal
- Nail Clipping

All breeds welcome

Fully qualified and insured

*I work on a one-to-one basis with your dog - so rest assured they will receive the very best care.*

**£5 off with this advert  
in March & April**

Contact Sarah on

**07843 953 925**

Or email:

**pawfectpupsgrooming@hotmail.co.uk**

Coton Park, Linton, Swadlincote, Derbyshire DE12 6RF



**City & Guilds  
Qualified**



Find us on  
**Facebook**

## Chris Knight

*After-dinner speaker and  
Show Compère*

*The outgoing personality of Chris Knight shines as he leads you through his life. From Moving an Elderly Aunt to the London Olympics 2012, hobbies and family life.*

Telephone: **01283 221214** Mobile: **07745 448836**

Email: **cjcknight@supanet.com**



# The Ladykillers

by Graham Linehan

From the Motion Picture Screenplay by William Rose  
By Special Arrangement with StudioCanal and  
By Special Arrangement with Fiery Angel Ltd, London



at the Brewhouse, Burton upon Trent  
**TUESDAY 10<sup>TH</sup> to SATURDAY 14<sup>TH</sup>**  
**MARCH 2015**

at 7.30pm each evening plus Saturday matinee at 2.30pm

Tickets: £9.00 Adults • £8.00 Concessions  
(Concessions available Tuesday to Thursday only - Matinee Tickets all £8.00)

Brewhouse Box Office: 01283 508100 • LTC Box Office: 01283 542446  
LTC Website and secure online booking @ [www.little-theatre.co.uk](http://www.little-theatre.co.uk)

The Ladykillers is presented by special arrangement with Samuel French Limited

# SINBAD

AND HIS 8TH VOYAGE

## CHORUS AND DANCERS



BARBARA BOND



OLIVIA BOYCE



TERESA BRAY



LAURA CRADDOCK



AMY GAUNT



SARAH GOODALL



SAM HARRISON



LESLEY HILL



CHARLOTTE HOLBURN



CHLOE HORTON



PAM ILLSLEY



RUTH MURFIN



EMMA PHILLIPS



KATHRYN PREECE



# CAST MEMBERS



**PRINCE SAID**  
*Sharon Hughes*



**SINBAD**  
*Gemma East*



**PRINCESS MIRANDA**  
*Danielle Collyer*



**SILLY SALLY**  
*Joanne McGurk*



**NORMA SNICKERS**  
*Martin Goodall*



**TINBAD THE TAILOR**  
*Nick Holburn*



**THE CALIPH**  
*Karl Forst*



**THE WAZIR**  
*Peter Bourne*

# SINBAD

AND HIS 8TH VOYAGE



**EYILENA**  
*Kerry-Ann Roe*



**FORTUNA**  
*Jodie Swann*



**THE OLD MAN OF THE SEA**  
*Chris McGurk*



**TRACE**  
*June Austin*



**SNAFFLE**  
*Lynda Freeman*



**SLAVE SELLER**  
*Chris Knight*

## PREVIOUS PRODUCTIONS

1972	Aladdin
1973	Dick Whittington
1974	Jack And The Beanstalk
1975	Robinson Crusoe
1976	Little Miss Muffet
1977	Mother Goose
1978	Aladdin
1979	Cinderella
1980	Dick Whittington
1981	Old Mother Hubbard
1982	Robinson Crusoe
1983	Jack And The Beanstalk
1984	Goldilocks And The 3 Bears
1985	Babes In The Wood
1986	Sleeping Beauty
1987	Sing A Song Of Sixpence
1988	Hickory Dickory Dock
1989	Aladdin
1990	Puss In Boots
1991	Humpty Dumpty
1992	Mother Goose
1993	Little Bo Peep
1994	Jack And The Beanstalk
1995	Cinderella
1996	All Baba
1997	Beauty And The Beast
1998	Dick Whittington
1999	Sleeping Beauty
2000	Little Red Riding Hood
2001	Cinderella
2002	Aladdin
2003	Puss In Boots
2004	Robinson Crusoe
2005	Snow White
2006	Sinbad The Sailor
2007	Mother Goose
2008	Jack And The Beanstalk
2009	Babes In The Wood
2010	Dick Whittington
2011	Cinderella
2012	Beauty and the Beast
2013	Aladdin
2014	Snow White and the Seven Dwarfs

## OUR SPECIAL THANKS ARE EXTENDED

TO

All our sponsors and advertisers  
The Brewhouse Team  
Burton & District Arts Council  
Front of House Staff and Assistants  
Adrian's Video Services  
Raffle Prize Donors  
Little Theatre Company  
Mellow Dramatics

And all friends and family who have helped in many ways.

*Sinbad and Sleeping Beauty artwork by arrangement with idee Design*



## Anne Lee School of Speech and Drama

The Anne Lee School was established with the aim of giving students, young and old, the opportunity to enhance and develop their highest potential in the creative arts.

- Drama and Theatre
- Trinity Guildhall Examinations
- 100% Pass Rate
- Invaluable UCAS Points
- Highly Successful Productions
- Personal Development
- Confidence Building



Tel: 01283 517094

Email: [anneleeschoolofdrama@btconnect.com](mailto:anneleeschoolofdrama@btconnect.com)

Website: [www.anneleeschoolofdrama.co.uk](http://www.anneleeschoolofdrama.co.uk)

# YOUR LOCAL PANTO NEEDS



# YOU

Are you over 14 and interested in getting involved in comedy, acting, singing or dancing in a panto? Especially dancing?

Burton Amateur Stage Entertainers (BASE) have been putting on traditional family pantomimes in Burton for over 40 years.

We need **new members** - of any age (14+).

**Some quick facts:** • 1 panto per year (February) • Auditions in early Sept  
• Rehearsal at Brewhouse every Wednesday 7:30-9:30pm Sept-Dec •  
Additional rehearsal every Sunday 2-6pm Jan-Feb • Attendance expected at all rehearsals • Annual membership subs £20 (concessions), £30 (adults)

We need you if you can sing, dance or act - *especially dance!*

Interested? Email us for more information:

[join@base-panto.com](mailto:join@base-panto.com)

Or visit our website to find out more about our group and our past productions:

[www.base-panto.com](http://www.base-panto.com)

base Burton Amateur  
Stage Entertainers



# £750 RAISED FOR CHARITY

In 2014, during our Snow White and the Seven Dwarfs panto, we raised money for local charity - Home Start East Staffordshire.

If you're a parent or maybe a grandparent, you know just how tough family life can be at times. Home Start volunteers know it too. They have parenting experience and help families with all sorts of problems, from the everyday to the overwhelming. They could be playing or reading with the children to give mum a break, helping the family to get out and about to a group or the library, assist with attending health appointments or provide a listening ear and words of comfort and understanding. The only thing they don't do is babysit or clean!

As a volunteer you need to complete an 8 session training course then have just 2 hours spare a week to provide emotional and practical support to a family. The course prepares you for the volunteering role and will cover: non-judgemental listening skills, values & attitudes, confidentiality & boundaries, depression, domestic violence and child protection.

Do you need any qualifications to be a volunteer?

The only real 'qualification' you need to become a Home-Start volunteer is experience of bringing up children. You will be friendly and understanding and have a practical approach to problems. You don't judge people, you accept them for what they are and then strive to support them as they try to give their children the best possible start in life. If you think you can help, then please contact Home-Start East Staffs or 01283 566684 for a chat and to find out more.

# Home START

Support and friendship  
for families



# woodland auto centre

**Servicing | MOT | Sales | Diagnostics**

For all makes

Servicing and repairs

Select used cars for sale

Unit 1, Pool Street, Church Gresley,  
Swadlincote DE11 8EE

Tel: 01283 223436

mellow  
dramatics

# BAD GIRLS

the musical

**The Brewhouse Arts Centre**  
**12th to 16th May 2015**

Evenings 7:30pm Matinee (Sat only) 2:30pm  
Tickets from £10. 5 for 4 offer Tues, Wed, Thurs & Sat matinee

**BOOK  
NOW**

**Box Office 01283 508100**

For more information visit [www.mellow-dramatics.org](http://www.mellow-dramatics.org)

Based on the TV series. Contains adult themes.

Book by Maureen Chadwick & Ann McManus, music & lyrics by Kath Gotts

Originally directed by Maggie Norris, orchestrations by Martin Koch

This amateur production is presented by arrangement with Josef Weinberger Limited.  
The Mellow Dramatics Musical Theatre Group are a registered charity 1090452



make **your** house stand out  
choose the **right** agent!

Are you thinking of selling or trying to move?  
Then why not call Burton's friendliest  
and most professional estate agent.

We are offering **20% OFF** off our standard  
fee if you instruct us to sell your property.

Call us now to arrange your  
**free** market appraisal.

  
**NEWTON**  
FALLOWELL

**01283 564657**  
[burton@newtonfallowell.co.uk](mailto:burton@newtonfallowell.co.uk)

base Burton Amateur  
Stage Entertainers

Members of Burton and District Arts Council  
Affiliated to the National Operatic and Dramatic Association  
Honorary President..... Mike Mear

**Committee**

Chairman..... Martin Goodall  
Vice Chairman..... Karl Forst  
Treasurer..... Chris Knight  
Secretary..... Gemma East  
Minutes Secretary..... Barbara Bond  
Publicity Secretary..... Peter Bourne  
Ticket Secretary..... Karl Forst  
Patron Secretary..... Jodie Swann  
Music Secretary..... Gemma East  
Social Secretary..... Sharon Hughes  
Recruitment Secretary..... Joanne McGurk  
Committee Members..... Bob Bond, Nick Holburn,  
Chris McGurk, Sarah Goodall

**Honorary Life Patrons**

Mrs J Broadhurst, Mrs P Broadhurst-Smith, Mr & Mrs N Clarke,  
Mr W Hughes, Mrs A Tite

**Patrons**

Mrs P Anderson, Mr R Bond, Mr & Mrs Davis, Mr A Horton,  
Mr & Mrs Owen, Miss R Street, Mrs P Thorpe

Authentic Italian Restaurant



Open Tuesday - Saturday: 6pm - 10pm

Available for private functions: Sunday & Monday

New Street Car Park  
Burton upon Trent  
DE14 3QN

01283 533230

# WIN A FAMILY TICKET TO SLEEPING BEAUTY IN 2016

Can you spot the FIVE differences between these photos? If you can - circle the changes, and fill in your details below for your chance to win a family ticket to next year's panto - Sleeping Beauty.

Return your winning entries to: BASE, c/o Bleak House, 68 Ashby Road, Boundary, Derbyshire. DE11 7BY



Your name: \_\_\_\_\_

Your email address: \_\_\_\_\_

Your telephone: \_\_\_\_\_

## Terms and Conditions

1. All entries must be on an original programme (no photocopies).
2. Full contact details must be supplied on the entry form.
3. Entries must be returned to the address above by 26th February 2015. The winner will be drawn at random from all correct entries - and the winner notified shortly afterwards. Answers will appear on our website ([www.base-panto.com](http://www.base-panto.com)) shortly after this date.
4. Members of BASE are not eligible to enter.
5. Prize is one Family Ticket to Sleeping Beauty in February 2016 (usual Family ticket restrictions apply). No monetary equivalent offered.

YOUR LOCAL HIRE COMPANY COVERING BURTON,  
LICHFIELD, TAMWORTH & SURROUNDING AREAS

# BIG

## OR SMALL WE HAVE THEM ALL

**From small vans to 7.5 ton trucks**

An extensive fleet of vans & cars with facilities you would only expect from the best multi-national companies, all from your local family run hire company.



Group A cars such as a Renault Clio or Fiat Punto. Group B cars such as a Toyota Yaris or Ford Fusion. Group C cars such as a Ford Mondeo or Vauxhall Vectra. Group D cars such as a Volvo Estate. Group D 7 seater MPV's & 4x4's.



\*Car derived van, provides a little more space than an estate car



\*Ideal for moving furniture such as chairs and settees



\*Long wheel base van, ideal for larger items of furniture and fridge-freezers



\*Minibus for those days out and special occasions



\*The Luton with a 500kg tail lift. Makes light work of moving domestic appliances



\*A 7.5 ton truck, 1000kg tail lift. For the experienced, will hold the contents of a small 3 bed house



**CAN ANYONE BEAT US FOR PRICE, QUALITY & SERVICE?**

**SAVE 10% DISCOUNT**  
OFF OUR ALREADY LOW VAN & CAR HIRE RATES

CONDITIONS APPLY

**mercury**  
rent-a-car

**OPEN 7 DAYS**



Visit our website for address and location details of your nearest branch or ring the numbers below.

**[www.mercuryrentacar.co.uk](http://www.mercuryrentacar.co.uk)**

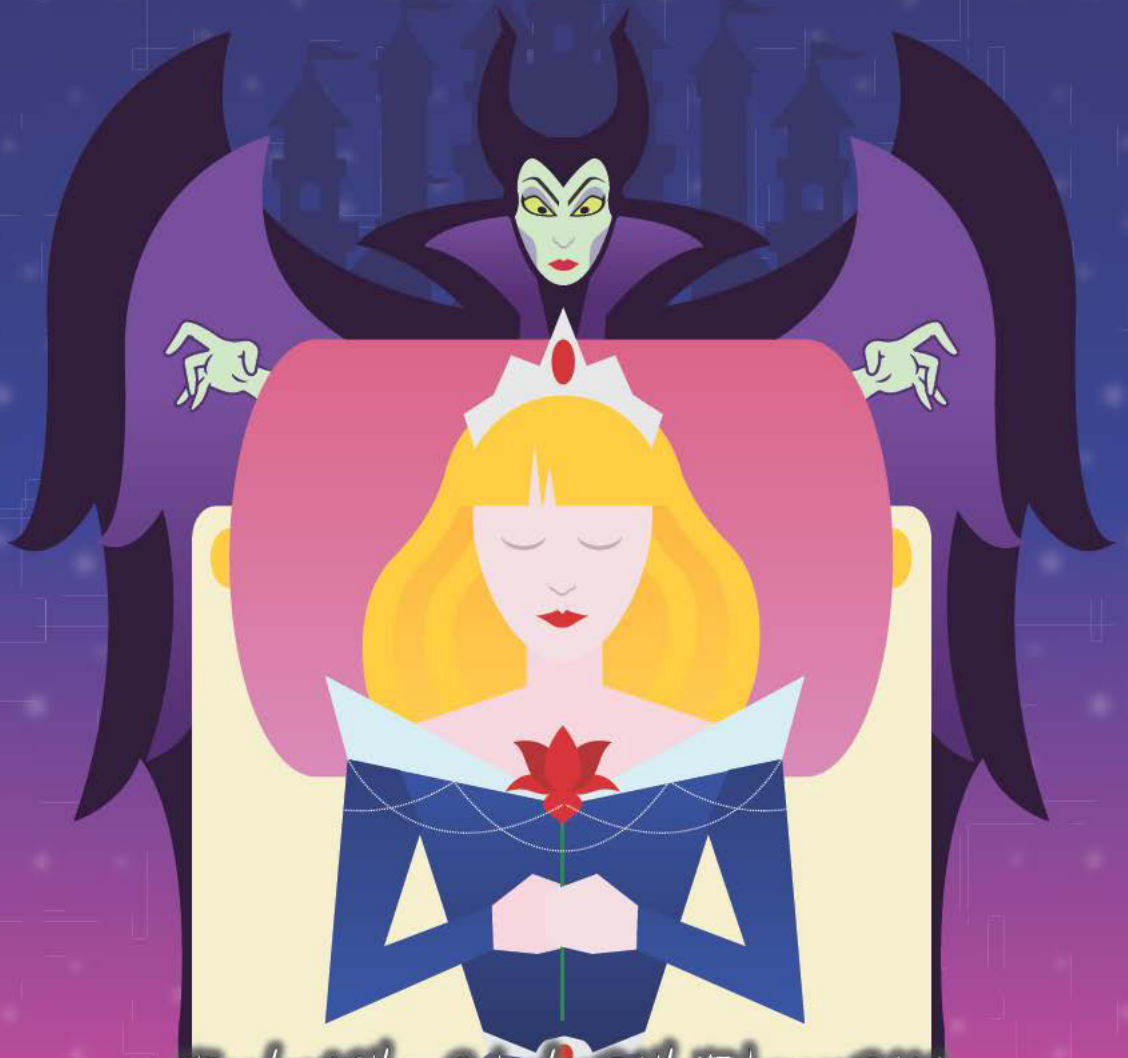
TAMWORTH BRANCH **01827 289888**

BURTON BRANCH **01283 539123**

LICHFIELD BRANCH **01543 417755**

base Burton Amateur  
Stage Entertainers

# Sleeping Beauty



*Tuesday 16th - Saturday 20th February 2016  
Nightly 7.30pm, Thursday & Saturday Matinee 2.30pm  
At the Brewhouse Arts Centre, Burton upon Trent*